

# Alberto Nepomuceno (1865–1920)

## A jangada (1920)

Texto: Juvenal Galeno

Editoração: Thiago Rocha

voz, orquestra  
(*voice, orchestra*)

Partes:

[Flauta 1 – p.1](#)

[Flauta 2 – p.3](#)

[Oboé 1 – p.5](#)

[Oboé 2 – p.7](#)

[Clarinete 1 em Bb – p.9](#)

[Clarinete 2 em Bb – p.11](#)

[Fagote 1 – p.13](#)

[Fagote 2 – p.15](#)

[Trompa 1 em Fá – p.17](#)

[Trompa 2 em Fá – p.19](#)

[Soprano – p.21](#)

[Violino I – p.23](#)

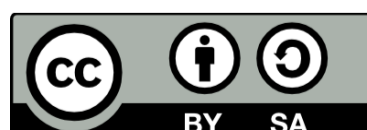
[Violino II – p.25](#)

[Viola – p.27](#)

[Violoncelo – p.29](#)

[Contrabaixo – p.31](#)

31 p.





# A jangada

Poesia de  
Juvenal Galeno

Alberto Nepomuceno

**Moderato**

*f* *mf*

5

*p*

9

*p*

**A**

4  
14-17

3  
18-20

3  
21-23 *f*

**B**

7  
25-31

**Para terminar**

4  
32-35 *pp*



# A jangada

Poesia de  
Juvenal Galeno

Alberto Nepomuceno

**Moderato**

*f* *mf*

5

*p*

9

*p*

**A**

4  
14-17

3  
18-20

3  
21-23 *f*

**B**

7  
25-31

**Para terminar**

4  
32-35 *pp*



# A jangada

Poesia de  
Juvenal Galeno

Alberto Nepomuceno

**Moderato** 1. solo

*f* *mf*

5 *p*

9 *p*

**A**

4  
14-17

3  
18-20

2  
21-22 *mf*

**B**

7  
25-31

**Para terminar**

4  
32-35

1.  
*pp*





# A jangada

Poesia de  
Juvenal Galeno

Alberto Nepomuceno

**Moderato**

**13**

1-13

**A**

**4**

14-17

**3**

18-20

**2**

21-22

*mf*

**B**

**7**

25-31

**Para terminar**

**5**

32-36



# A jangada

Poesia de  
Juvenal Galeno

Alberto Nepomuceno

**Moderato**

1.

*f*

2

3-4

5

1.

*p*

9

a2

*p*

**A**

4

3

2

14-17

18-20

*mf*

23-24

**B**

*p*

29

**Para terminar**

32

*pp*



# A jangada

Poesia de  
Juvenal Galeno

Alberto Nepomuceno

**Moderato**

8  
1-8

9 a2  
*p*

**A**  
4 3 2  
14-17 18-20  $\sharp$  *mf* 23-24

**B**  
*p*

29

**Para terminar**  
32  
*pp*



# A jangada

Poesia de  
Juvenal Galeno

Alberto Nepomuceno

Moderato

1.

*f* *mf*

5

*p*

5

9-13

**A**

1.

*p*

18

21

a2

*mf* *f*

**B**

*p*

29

**Para terminar**

32

*pp*





# A jangada

Poesia de  
Juvenal Galeno

Alberto Nepomuceno

**Moderato**

**13**

1-13

A musical staff in bass clef with a key signature of three flats and a 2/4 time signature. It contains a single whole rest that spans the entire 13-measure duration of the first section.

**A**

**4**

14-17

A musical staff in bass clef with a key signature of three flats. It contains a single whole rest that spans the 4-measure duration of section A.

**3**

18-20

A musical staff in bass clef with a key signature of three flats. It contains a single whole rest that spans the 3-measure duration of the next section.

21

a2

*f*

A musical staff in bass clef with a key signature of three flats. It begins with a whole rest for one measure, followed by a quarter note on G2, a quarter rest, a quarter note on G2, a quarter rest, and a quarter note on G2. A dynamic marking of *f* is placed below the final note.

**B**

*p*

A musical staff in bass clef with a key signature of three flats. It contains a sequence of seven quarter notes on G2, each followed by a quarter rest. A dynamic marking of *p* is placed below the first note. A hairpin crescendo symbol is positioned below the staff, starting under the first note and ending under the seventh note.

32

**Para terminar**

*pp*

A musical staff in bass clef with a key signature of three flats. It contains a sequence of five quarter notes on G2, each followed by a quarter rest. The final note is a half note on G2 with a fermata above it. A dynamic marking of *pp* is placed below the final note. A hairpin crescendo symbol is positioned below the staff, starting under the first note and ending under the final note.



# A jangada

Poesia de  
Juvenal Galeno

Alberto Nepomuceno

Moderato

1.  
*f* *mf*

4  
5-8

9  
1.  
*p*

A  
*p*

18

2  
21-22  
*mf* *f*

B  
1.  
*p*

29

32  
Para terminar  
*p* *pp*



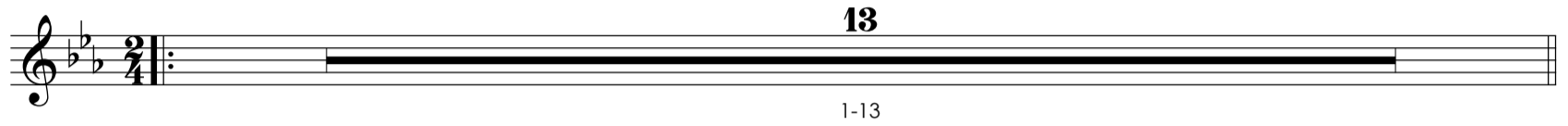
# A jangada

Poesia de  
Juvenal Galeno

Alberto Nepomuceno

**Moderato**

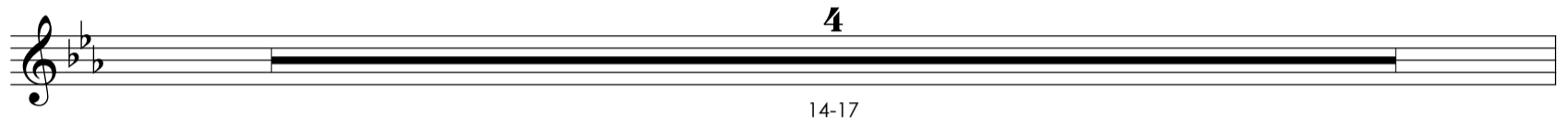
**13**



1-13

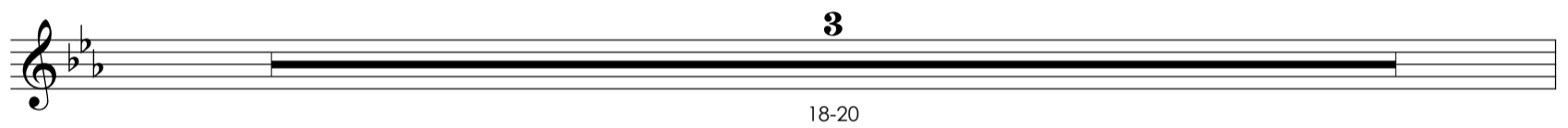
**A**

**4**



14-17

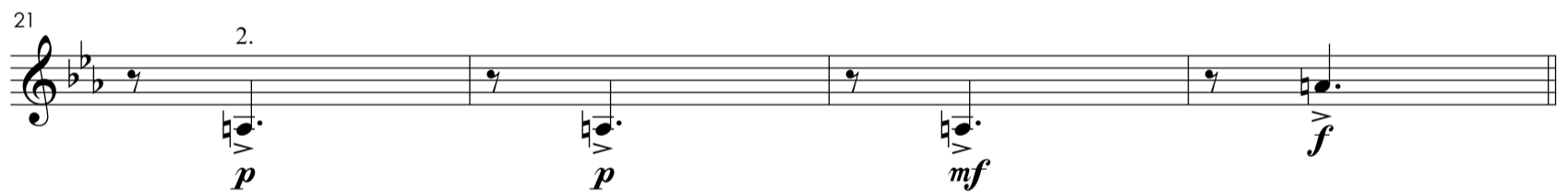
**3**



18-20

21

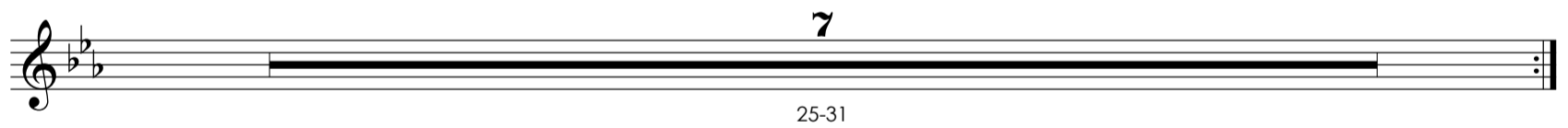
2.



*p* *p* *mf* *f*

**B**

**7**



25-31

**Para terminar**

**5**



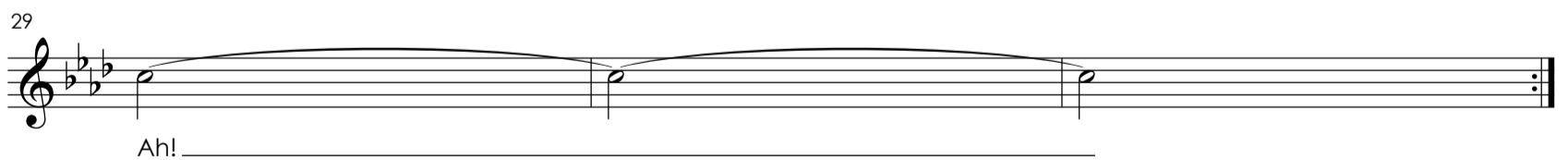
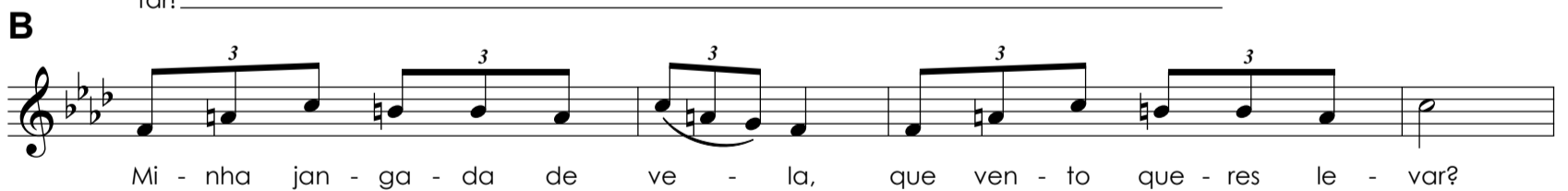
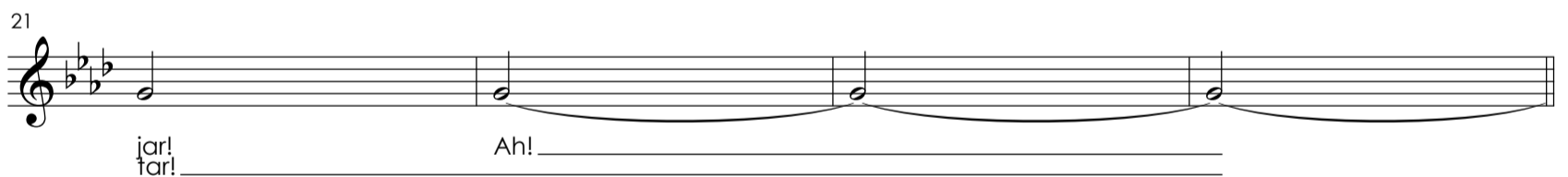
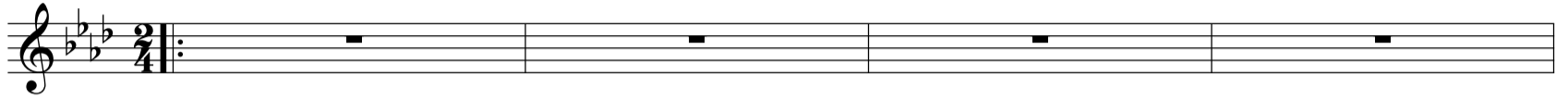
32-36



## A jangada

Poesia de  
Juvenal Galeno

Alberto Nepomuceno

**Moderato****Para terminar**





# A jangada

Poesia de  
Juvenal Galeno

Alberto Nepomuceno

**Moderato** *punta d'arco*

*f* *mf*

5

*p* *mf*

9

*p* *mf*

**A** *unis.*

*p* *mf*

18

*mf* *f*

**2**

21-22 *mf* *f*

**B** *pizz.*

*pp* *pp* *pp* *mf*

**Para terminar** *pizz.*

32

*p* *pp* *arco* *pp*



# A jangada

Poesia de  
Juvenal Galeno

Alberto Nepomuceno

**Moderato** punta d'arco

*f* *mf*

5 *p*

9 unis.

**A**

*p*

18

21-22 *mf* *f*

**B** pizz. *pp* *pp*

29

32 **Para terminar** pizz. *p* arco *pp*



# A jangada

Poesia de  
Juvenal Galeno

Alberto Nepomuceno

**Moderato**

punta d'arco

Measures 1-4: Bass clef, 2/4 time signature, key signature of two flats. The music consists of quarter notes with stems pointing down. Dynamics: *f* (measures 1-2), *mf* (measures 3-4). A hairpin crescendo is shown over measures 3 and 4.

Measures 5-8: Bass clef, 2/4 time signature, key signature of two flats. The music consists of quarter notes with stems pointing down. Dynamic: *p* (measure 5). A hairpin crescendo is shown over measures 7 and 8.

div.

Measures 9-16: Bass clef, 2/4 time signature, key signature of two flats. The music consists of eighth notes beamed in pairs, with stems pointing down. A hairpin crescendo is shown over measures 15 and 16.

**A**

unis.

Measures 17-19: Bass clef, 2/4 time signature, key signature of two flats. The music consists of quarter notes with stems pointing down. A hairpin crescendo is shown over measures 18 and 19.

Measures 20-28: Bass clef, 2/4 time signature, key signature of two flats. The music consists of quarter notes with stems pointing down. Dynamic: *f* (measure 20). A hairpin crescendo is shown over measures 27 and 28.

**B**

*p*

Measures 29-28: Bass clef, 2/4 time signature, key signature of two flats. The music consists of eighth notes beamed in pairs, with stems pointing down. Dynamic: *p* (measure 29). A hairpin crescendo is shown over measures 27 and 28.

Measures 29-31: Bass clef, 2/4 time signature, key signature of two flats. The music consists of eighth notes beamed in pairs, with stems pointing down. A hairpin crescendo is shown over measures 30 and 31.

**Para terminar**

Measures 32-39: Bass clef, 2/4 time signature, key signature of two flats. The music consists of eighth notes beamed in pairs, with stems pointing down. Dynamic: *pp* (measure 32). A hairpin crescendo is shown over measures 37 and 38.



# A jangada

Poesia de  
Juvenal Galeno

Alberto Nepomuceno

**Moderato**

punta d'arco

First line of musical notation, measures 1-4. Bass clef, key signature of three flats, 2/4 time signature. Dynamics: *f* (measures 1-2), *mf* (measures 3-4). A hairpin crescendo is shown above the staff.

Second line of musical notation, measures 5-8. Dynamics: *p* (measures 5-8).

Third line of musical notation, measures 9-12. Dynamics: *pp* (measures 9-12). The instruction "pizz." is written above the staff.

Section A: Musical notation for measures 13-19. Dynamics: *p* (measures 13-19). The instruction "arco" is written above the staff.

Fourth line of musical notation, measures 20-28. Dynamics: *f* (measures 20-28). A hairpin crescendo is shown below the staff.

Section B: Musical notation for measures 29-31. Dynamics: *p* (measures 29-31). A hairpin crescendo is shown below the staff.

Section B: Musical notation for measures 32-35. Dynamics: *pp* (measures 32-35). A hairpin crescendo is shown below the staff.

**Para terminar**

Section B: Musical notation for measures 36-40. Dynamics: *pp* (measures 36-40). A hairpin crescendo is shown below the staff.





# A jangada

Poesia de  
Juvenal Galeno

Alberto Nepomuceno

**Moderato**  
pizz.

5

*f* *mf*

9

*p*

13

*p sempre*

## A

17

18

21

arco

*f*

## B

25

pizz.

*p*

29

## Para terminar

32

*p* *dim.* *pp*

div.