

# Homero de Sá Barreto (1884-1924)

Suíte antiga (1913)

Editoração: Thadeu de Moraes Almeida

orquestra de cordas  
(*string orchestra*)

Partes:

Violino I  
Violino II  
Viola  
Violoncelo  
Contrabaixo

25 p.



MUSICA BRASILIS

# Suíte antiga

## I. Gavotte et Musette

Violino I

Homero de Sá Barreto  
1913

**Allegretto**  $\frac{3}{8}$

*p* *f*

5 *poco rit.* *tr* *dim.* *a tempo* *p*

10 *f*

15 *poco rit.* *tr* *dim.* *mf*

20 *rit.* *a tempo* *mf*

25 *f*

30 *tr* *p*

35 *f* *poco rit.* *tr* *dim.*

40 *a tempo*  
*p* *f*

45 *tr*

**Musette**  
**Andante**  
 49 *p* *mf*

55 *mf* *f*

60 *rall.*

65 *poco più mosso*  
*mf*

69 *f* *mf* *pp* **Andante** *p*

75 *rall.*

79 1. 2. **D.S. ao Coda** *pp* *pp* *cresc. e allargando molto* *tr* *ff*

## II. Sarabanda

Violino I

**Largo**

*p*

4

*tr*

7

*rall.*

*V*

*pp*

**Fim**

9

*p*

12

*cresc. molto*

15

*V*

3

*ff*

18

*V*

*p*

21

3

*rall.*

*pp*

**D.C. ao Fim**

## III. Minueto

Violino I

**Allegretto**  
*con grazia*

Measures 1-3 of the Minuet. The music is in treble clef, key of D major, and 3/4 time. It begins with a piano (*p*) dynamic. The first measure contains a quarter note D4, a quarter note E4, and a quarter note F#4. The second measure contains a quarter note G4, a quarter note A4, and a quarter note B4. The third measure contains a quarter note A4, a quarter note G4, and a quarter note F#4. A slur covers the last two notes of the second measure and the first note of the third measure.

Measures 4-6 of the Minuet. Measure 4 starts with a dynamic marking of *p*. Measure 5 contains a crescendo (*cresc.*) marking. The music continues with a quarter note G4, a quarter note F#4, and a quarter note E4. A slur covers the last two notes of measure 5 and the first note of measure 6.

Measures 7-9 of the Minuet. Measure 7 starts with a dynamic marking of *p*. Measure 8 contains a ritardando (*rit.*) marking. Measure 9 contains an *a tempo* marking. The music continues with a quarter note D4, a quarter note E4, and a quarter note F#4. A slur covers the last two notes of measure 8 and the first note of measure 9.

Measures 10-12 of the Minuet. Measure 10 starts with a dynamic marking of *p*. Measure 11 contains a crescendo (*cresc.*) marking. The music continues with a quarter note G4, a quarter note A4, and a quarter note B4. A slur covers the last two notes of measure 11 and the first note of measure 12.

Measures 13-16 of the Minuet. Measure 13 starts with a dynamic marking of *p*. Measure 14 contains a crescendo (*cresc.*) marking. Measure 15 contains a trill (*tr*) marking. Measure 16 contains a dynamic marking of *p*. The music continues with a quarter note G4, a quarter note F#4, and a quarter note E4. A slur covers the last two notes of measure 15 and the first note of measure 16.

Measures 17-19 of the Minuet. Measure 17 starts with a dynamic marking of *p*. The music continues with a quarter note D4, a quarter note E4, and a quarter note F#4. A slur covers the last two notes of measure 17 and the first note of measure 18.

Measures 20-22 of the Minuet. Measure 20 starts with a dynamic marking of *p*. Measure 21 contains a crescendo (*cresc.*) marking. The music continues with a quarter note G4, a quarter note A4, and a quarter note B4. A slur covers the last two notes of measure 21 and the first note of measure 22.

Measures 23-25 of the Minuet. Measure 23 starts with a dynamic marking of *f*. Measure 24 contains a ritardando (*rit.*) marking. Measure 25 contains a dynamic marking of *p*. The music continues with a quarter note D4, a quarter note E4, and a quarter note F#4. A slur covers the last two notes of measure 24 and the first note of measure 25.

26

29

*cresc.*

*f*

*tr*

*D.C. ao Coda*  
*rit.*

32

*p*

35

*cresc.*

38

*f*

*f*

41

*ff*

*più mosso*

*p*

44

*tr*

47

*cresc.*

49

*f*

*allarg.*

*ff*

# Suíte antiga

## I. Gavotte et Musette

Violino II

Homero de Sá Barreto  
1913

**Allegretto** 



*p* *f*

5 *poco rit.* *a tempo*  
*dim.* *p*

10 *f*

15 *poco rit.*  
*dim.* *mf*

20 *rit.* *a tempo*

25 *mf* *f*

30 *p*

35 *poco rit.*   
*f* *dim.*

40 *a tempo*

45

### Musette

49 *Andante*

55

60 *rall.*

65 *poco più mosso*

70 *rall.* *Andante*

75 *rall.*

80 1. 2. **D.S. ao Coda**

*cresc. e allargando molto*



# II. Sarabanda

Violino II

**Largo**

*p*

4

7 *rall.* **Fim**  
*pp*

9 *p*

12 *cresc. molto*

15 *ff*

18 *p*

21 *rall.* **D.C. ao Fim**  
*pp*

## III. Minueto

Violino II

**Allegretto**  
*con grazia*

Measures 1-3 of the Minuet. The music is in treble clef, key of D major (one sharp), and 3/4 time. It begins with a piano (*p*) dynamic. The first measure contains a quarter note D4, a quarter note E4, and a quarter note F#4. The second measure contains a half note G4. The third measure contains a quarter note A4, a quarter note B4, and a quarter note C5.

Measures 4-6 of the Minuet. Measure 4 starts with a measure rest followed by a quarter note D4. Measure 5 contains a quarter note E4, a quarter note F#4, and a quarter note G4. Measure 6 contains a quarter note A4, a quarter note B4, and a quarter note C5. A crescendo (*cresc.*) marking is placed above the staff.

Measures 7-9 of the Minuet. Measure 7 contains a quarter note D4, a quarter note E4, and a quarter note F#4. Measure 8 contains a quarter note G4, a quarter note A4, and a quarter note B4. Measure 9 contains a quarter note C5, a quarter note B4, and a quarter note A4. A ritardando (*rit.*) marking is placed above the staff, and a mezzo-forte (*mf*) dynamic marking is placed below the staff. The tempo returns to *a tempo*.

Measures 10-12 of the Minuet. Measure 10 contains a quarter note D4, a quarter note E4, and a quarter note F#4. Measure 11 contains a quarter note G4, a quarter note A4, and a quarter note B4. Measure 12 contains a quarter note C5, a quarter note B4, and a quarter note A4.

Measures 13-16 of the Minuet. Measure 13 contains a quarter note D4, a quarter note E4, and a quarter note F#4. Measure 14 contains a quarter note G4, a quarter note A4, and a quarter note B4. Measure 15 contains a quarter note C5, a quarter note B4, and a quarter note A4. Measure 16 contains a quarter note G4, a quarter note F#4, and a quarter note E4. A crescendo (*cresc.*) marking is placed above the staff, and a piano (*p*) dynamic marking is placed below the staff.

Measures 17-19 of the Minuet. Measure 17 contains a quarter note D4, a quarter note E4, and a quarter note F#4. Measure 18 contains a quarter note G4, a quarter note A4, and a quarter note B4. Measure 19 contains a quarter note C5, a quarter note B4, and a quarter note A4. A piano (*p*) dynamic marking is placed below the staff.

Measures 20-22 of the Minuet. Measure 20 contains a quarter note D4, a quarter note E4, and a quarter note F#4. Measure 21 contains a quarter note G4, a quarter note A4, and a quarter note B4. Measure 22 contains a quarter note C5, a quarter note B4, and a quarter note A4. A crescendo (*cresc.*) marking is placed above the staff.

Measures 23-25 of the Minuet. Measure 23 contains a quarter note D4, a quarter note E4, and a quarter note F#4. Measure 24 contains a quarter note G4, a quarter note A4, and a quarter note B4. Measure 25 contains a quarter note C5, a quarter note B4, and a quarter note A4. A forte (*f*) dynamic marking is placed below the staff. A ritardando (*rit.*) marking is placed above the staff, followed by a diminuendo (*dim.*) marking. The tempo returns to *a tempo*, and a piano (*p*) dynamic marking is placed below the staff.



# Suíte antiga

## I. Gavotte et Musette

Viola

Homero de Sá Barreto  
1913

**Allegretto** 



*p* *f*

5 *poco rit.* *a tempo*  
*dim.* *p*

10 *f*

15 *poco rit.*  
*dim.* *mf*

20 *rit.* *a tempo*

25 *mf* *f*

30 *p*

35 *poco rit.* *f* *dim.* 

40

*a tempo*

45

### Musette

49 *Andante*

55

60

*rall.*

65

*poco più mosso*

70

*rall.* **Andante**

75

*rall.*

80

1. **D.S. ao Coda**  $\oplus$  *cresc. e allargando molto*

# II. Sarabanda

Viola

**Largo**

1 *p*

4

7 *rall.* **Fim**

9 *p*

12 *cresc. molto*

15 *ff*

18 *p*

21 *rall.* **D.C. ao Fim**

### III. Minueto

Viola

**Allegretto**  
*con grazia*

1 *p*

4 *cresc.*

7 *rit.* *a tempo* *mf*

10

13 *cresc.* *p*

17 *p*

20 *cresc.*

23 *rit.* *dim.* *a tempo* *f* *p*

26

29

32

35

38

40

43

47



# Suíte antiga

## I. Gavotte et Musette

Violoncelo

Homero de Sá Barreto  
1913

**Allegretto** 



*p* *f*

5 *poco rit.* *a tempo*  
*dim.* *p*

10 *f*

15 *poco rit.*  
*dim.* *mf*

20 *mf* *rit.* *a tempo*

25 *mf* *f*

30 *p*

35 *f* *poco rit.*   
*dim.*

40

*a tempo*

*p* *f*

45

### Musette

49 *Andante*

*p* *mf*

55

*mf* *f*

60

*mf* *rall.*

65

*poco più mosso*

*mf* *f*

70

*mf* *rall.* *pp* *p* *Andante*

75

*mf* *rall.*

80

1. 2. *D.S. ao Coda* *cresc. e allargando molto* *ff*

## II. Sarabanda

Violoncelo

Largo

Musical score for Cello, II. Sarabanda, Largo. The score consists of nine staves of music in 3/4 time with a key signature of two sharps (F# and C#). The piece begins with a piano (*p*) dynamic. It features various musical elements including slurs, trills, triplets, and dynamic markings such as *p*, *pp*, *ff*, and *rall.* The piece concludes with a double bar line and the instruction "D.C. ao Fim".

## III. Minueto

Violoncelo

**Allegretto**  
*con grazia*

4

*p*

4

*cresc.*

7

*rit.* *a tempo*

*mf*

10

13

*cresc.*

*p*

17

*p*

19

22

*cresc.* *rit.* *dim.*

*f*

25 *a tempo*

*p*

28

30 *cresc.*

*f* *rit.* **D.C. ao Coda**

32  $\emptyset$

*p*

35

*cresc.*

38

*f* *f* *ff*

41

*ff* *più mosso* 4

47

*f* *cresc.* *f* *ff* *allarg.*

# Suíte antiga

## I. Gavotte et Musette

Contrabaixo

Homero de Sá Barreto  
1913

**Allegretto** 

*p* *f*

5 *poco rit.* *a tempo*  
*dim.*

9 *p* *f*

14 *poco rit.*  
*dim.*

17 *mf*

21 *2* *rit.* *a tempo*  
*mf*

27 *f* *2*

33 *p* *f*

37

37 *poco rit.*  
*dim.*

40

40 *a tempo*  
*p*

44

44 *f*

### Musette

49 Andante

49 **4**  
*mf*

57

57 **4**  
*f* *rall.*

64

64 *poco più mosso*  
**2**

69

69 *rall.* **2** **Andante**  
*f* *mf* *p*

75

75 *rall.*

80

80 1. 2. **D.S. ao Coda**  
*pp* *pp* *cresc. e allargando molto* *ff*

## II. Sarabanda

Contrabaixo

**Largo**

4

7

*rall.*

**Fim**

*pp*

9

12

*cresc. molto*

2

16

*ff*

19

22

*rall.*

**D.C. ao Fim**

*pp*



## III. Minueto

Contrabaixo

**Allegretto**  
*con grazia*

4

*p*

4

*cresc.*

7

*rit.* *a tempo*

*mf*

10

13

*cresc.*

*p*

17

*p*

20

*cresc.*

23

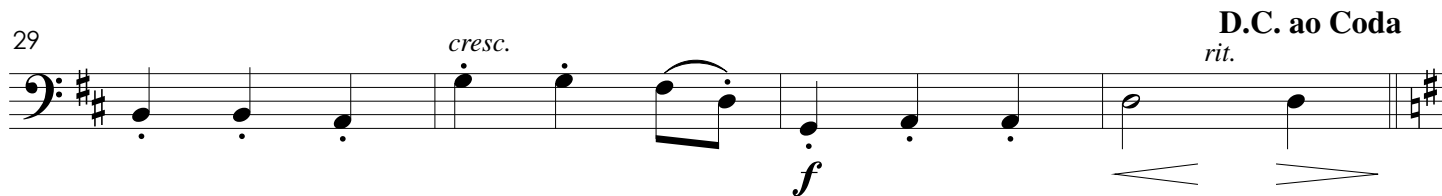
*rit.* *dim.* *a tempo*

*f* *p*

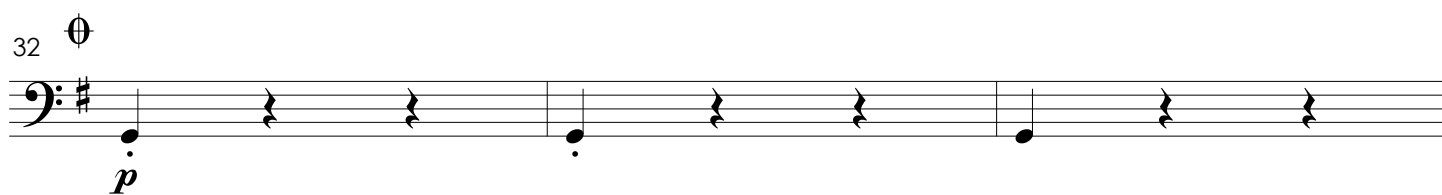
26



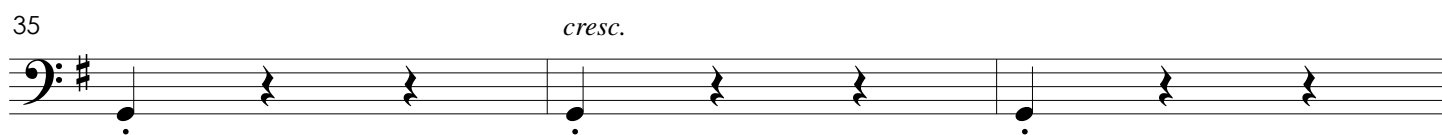
29



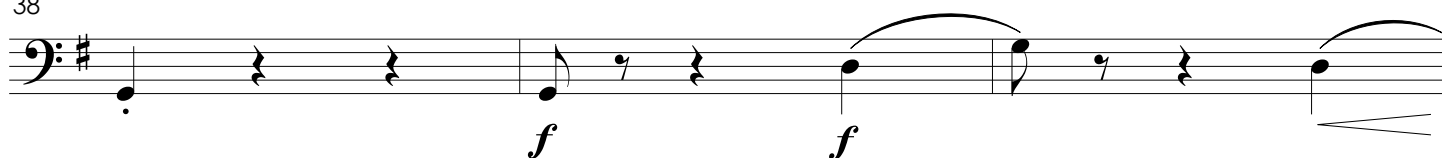
32



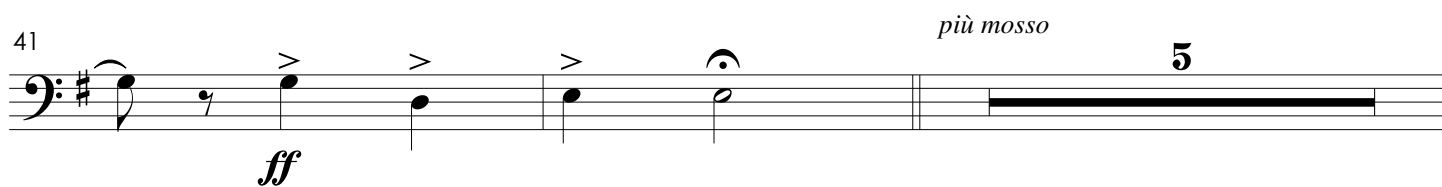
35



38



41



48

