

# João de Deus Serra (1867-1899)

Revista elegante  
Polca

Editoração: Guilherme Augusto de Ávila

Instituição: Arquivo Público do Estado do Maranhão

Fundo: Acervo João Mohana

Fontes: <http://apem.cultura.ma.gov.br/acervo/items/show/345>

flauta, clarineta, fagote, trompete, tímpano, violino, contrabaixo  
(*flute, clarinet, bassoon, trumpet, timpani, violin, double bass*)

Partes:

[Flauta 1](#)

[Flauta 2](#)

[Clarineta em Dó](#)

[Fagote](#)

[Trompete 1 em Sol](#)

[Trompete 2 em Sol](#)

[Tímpano](#)

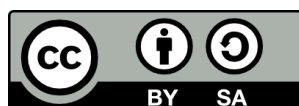
[Violino](#)

[Contrabaixo](#)

9 p.



9 790696 529138



MUSICA BRASILIS

Flauta 1

# Revista elegante

Polca

João de Deus Serra

## Introd.

6

11

17

23

27

31

35

40

45

Polca

*tr*

1.

2.

D.C.

Flauta 2

# Revista elegante

Polca

João de Deus Serra

## Introd.

## Polca

D.C.

Clarinetta em Dó

# Revista elegante

Polca

João de Deus Serra

## Introd.

3

6

Polca

tr

11

tr

17

tr

tr

24

1.

2.

29

tr

1.

34

2.

tr

40

tr

46

tr

D.C.

Fagote

# Revista elegante

Polca

João de Deus Serra

Introd.

6

12

18

24

29

33

37

42

47

D.C.

3

3

Polca

1.

2.

1.

2.

Trompete 1 em Sol

# Revista elegante

Polca

João de Deus Serra

## Introd.

6

10

15 Solo *tr*

22 1. 2.

26

30 *tr* 1.

34 2. *tr*

39 Solo

45 D.C.

Detailed description: The musical score is written for Trompete 1 em Sol in 2/4 time. It begins with an introduction (Introd.) consisting of two measures of quarter notes followed by two measures of eighth-note triplets. The main section, labeled 'Polca', starts at measure 6 and continues to measure 45. The key signature changes from one sharp (F#) to one flat (Bb) at measure 34. The score includes various musical ornaments such as trills (tr) and solo passages (Solo). Measure numbers 6, 10, 15, 22, 26, 30, 34, 39, and 45 are indicated at the start of their respective lines. The piece concludes with a double bar line and repeat dots at measure 45, labeled 'D.C.' (Da Capo).

Trompete 2 em Sol

# Revista elegante

Polca

João de Deus Serra

Introd.

6

Polca

10

15

tr

22

1. 2.

26

30

tr 1.

34

2. tr

39

45

D.C.

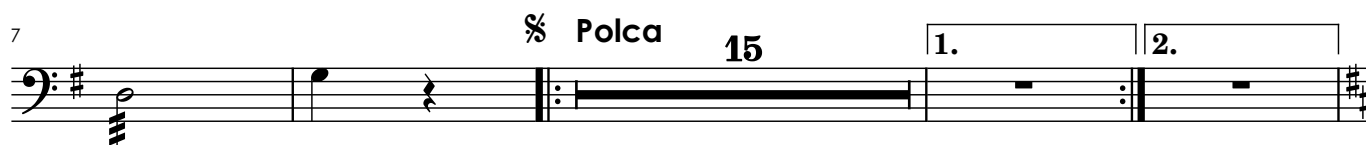
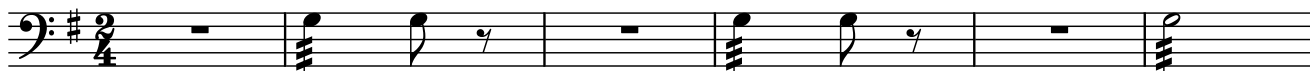
Tímpano

# Revista elegante

Polca

João de Deus Serra

## Introd.





Violino

# Revista elegante

Polca

João de Deus Serra

## Introd.

Musical notation for the introduction, starting with a treble clef, a key signature of one sharp (F#), and a 2/4 time signature. The piece begins with a half note G4, followed by a quarter rest. The second measure contains a triplet of eighth notes: G4, A4, and B4. This is followed by a quarter rest, then a half note G4, and another triplet of eighth notes: G4, A4, and B4. The piece concludes with a quarter rest, followed by four measures of a sustained chord (G4, B4, D5).

## Polca

Musical notation for the first staff of the polca section, starting with a treble clef, a key signature of one sharp (F#), and a 2/4 time signature. The piece begins with a repeat sign, followed by a quarter rest, then a quarter note G4, a quarter rest, and a quarter note G4. The next measure contains a triplet of eighth notes: G4, A4, and B4. This is followed by a quarter rest, then a quarter note G4, a quarter rest, and a quarter note G4. The piece concludes with a triplet of eighth notes: G4, A4, and B4.

Musical notation for the second staff of the polca section, starting with a treble clef, a key signature of one sharp (F#), and a 2/4 time signature. The piece begins with a quarter rest, followed by a triplet of eighth notes: G4, A4, and B4. This is followed by a quarter rest, then a quarter note G4, a quarter rest, and a quarter note G4. The next measure contains a quarter note G4, a quarter rest, and a quarter note G4. The piece concludes with a triplet of eighth notes: G4, A4, and B4.

Musical notation for the third staff of the polca section, starting with a treble clef, a key signature of one sharp (F#), and a 2/4 time signature. The piece begins with a quarter rest, followed by a triplet of eighth notes: G4, A4, and B4. This is followed by a quarter rest, then a quarter note G4, a quarter rest, and a quarter note G4. The next measure contains a quarter note G4, a quarter rest, and a quarter note G4. The piece concludes with a first ending bracket over the final two measures, ending with a repeat sign.

Musical notation for the fourth staff of the polca section, starting with a treble clef, a key signature of one sharp (F#), and a 2/4 time signature. The piece begins with a second ending bracket over the first two measures, ending with a repeat sign. The next measure contains a quarter rest, followed by a quarter note G4, a quarter rest, and a quarter note G4. The piece concludes with a triplet of eighth notes: G4, A4, and B4.

Musical notation for the fifth staff of the polca section, starting with a treble clef, a key signature of one sharp (F#), and a 2/4 time signature. The piece begins with a quarter rest, followed by a quarter note G4, a quarter rest, and a quarter note G4. The next measure contains a quarter note G4, a quarter rest, and a quarter note G4. The piece concludes with a first ending bracket over the final two measures, ending with a repeat sign.

Musical notation for the sixth staff of the polca section, starting with a treble clef, a key signature of one sharp (F#), and a 2/4 time signature. The piece begins with a quarter rest, followed by a triplet of eighth notes: G4, A4, and B4. This is followed by a quarter rest, then a quarter note G4, a quarter rest, and a quarter note G4. The next measure contains a quarter note G4, a quarter rest, and a quarter note G4. The piece concludes with a triplet of eighth notes: G4, A4, and B4.

Musical notation for the seventh staff of the polca section, starting with a treble clef, a key signature of one sharp (F#), and a 2/4 time signature. The piece begins with a quarter rest, followed by a quarter note G4, a quarter rest, and a quarter note G4. The next measure contains a quarter note G4, a quarter rest, and a quarter note G4. The piece concludes with a triplet of eighth notes: G4, A4, and B4.

Musical notation for the eighth staff of the polca section, starting with a treble clef, a key signature of one sharp (F#), and a 2/4 time signature. The piece begins with a quarter rest, followed by a quarter note G4, a quarter rest, and a quarter note G4. The next measure contains a quarter note G4, a quarter rest, and a quarter note G4. The piece concludes with a triplet of eighth notes: G4, A4, and B4.

D.C.

Contrabaixo

# Revista elegante

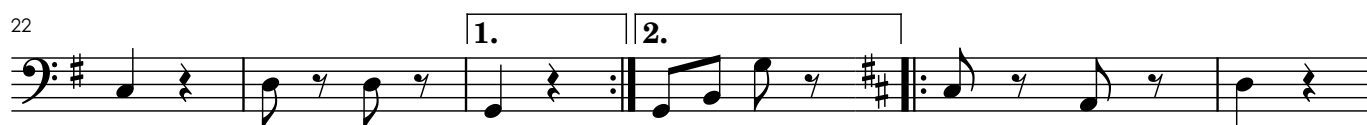
Polca

João de Deus Serra

## Introd.



## Polca



D.C.