

# Luís Álvares Pinto (1719-1789)

Dominus Jesus

Editoração: Thadeu de Moraes Almeida

coro  
(choir)

Partes:

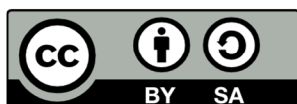
[Soprano](#)

[Alto](#)

[Tenor](#)

[Baixo](#)

4 p.



MUSICA BRASILIS

Soprano


# Dominus Jesus

Luís Álvares Pinto



Do - mi - nus Je - - - sus, post -

6



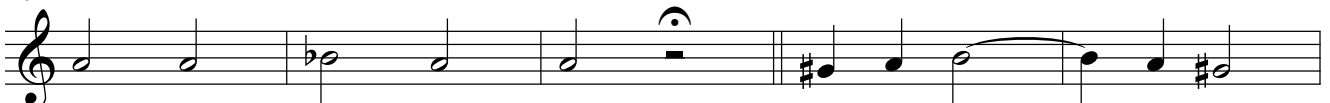
quam ce - na - vit cum dis - ci - pu - lis su -

11



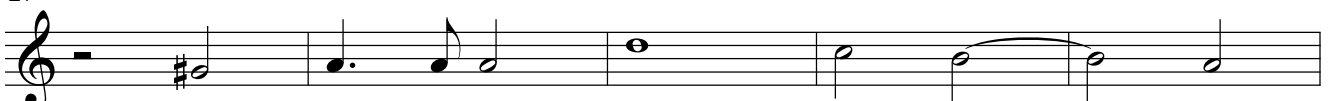
is, la - vit pe - des e - o - rum, et

16




a - it il - lis: Sci - - - tis

21




quid fe - ce - rim vo - bis, e - go

26




Do - mi - nus et Ma - gis - - -

31



ter? E - xem - plum de - di vo -

36



bis, ut \_\_\_\_\_ et vos \_\_\_\_\_ i - ta

41



fa - ci - a - - - tis.



Tenor

# Dominus Jesus

Luís Álvares Pinto

Do - mi - nus Je - - - sus post -

6

quam ce - na - vit cum dis - ci - pu - lis su -

11

is la - vi - pe - des e - o - rum, et

16

a - it il - - - lis: Sci - - - tis

21

quid fe - ce - rim vo - bis, e - go

26

Do - mi - nus et Ma - gis - ter, Ma -

31

gis - ter? E - xem - plum - de - di vo -

36

bis, ut et vos i - ta fa - ci - a - tis

41

fa - ci - a - - - tis.

Baixo

# Dominus Jesus

Luís Álvares Pinto



Do - mi - nus Je - sus \_\_\_\_\_ post -

6



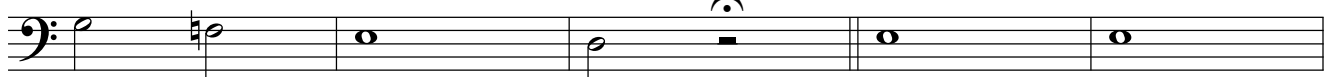
quam ce - na - vit cum dis - ci - pu - lis su -

11



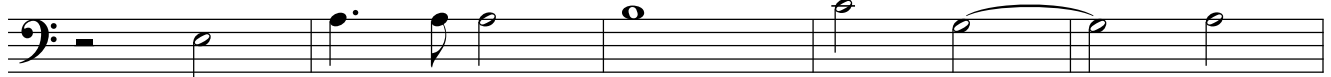
is la - vit pe - des e - o - rum, et

16



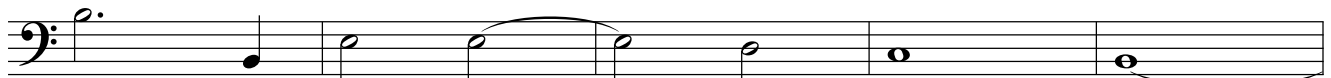
a - it il - lis: Sci - tis

21



quid fe - ce - rim vo - bis, e - go

26



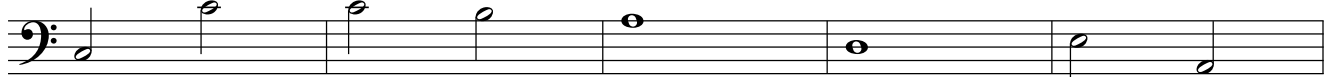
Do - mi - nus et \_\_\_\_\_ Ma - gis - ter? \_\_\_\_\_

31



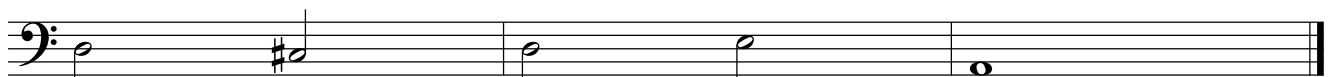
\_\_\_\_\_ E - xem - plum de di vo -

36



bis, ut et vos i - ta fa - ci -

41



a - - - - - tis.