

# Sinhô (1888-1930)

Se meu amor me vê  
Samba

Orquestração: Domingos da Rocha Mussurunga  
Editoração: Thiago Rocha

orquestra de câmara  
(*chamber orchestra*)

Partes:

[Flauta – p.7](#)

[Clarinete em Bb – p.8](#)

[Saxofone em Eb – p.9](#)

[Pistão em Bb – p.10](#)

[Trombone – p.11](#)

[Violino – p.12](#)

[Violoncelo – p.13](#)

[Contrabaixo – p.14](#)

14 p.



MUSICA BRASILIS

# Se meu amor me vê

Samba

Orquestração: Domingos da Rocha Mussurunga

Sinhô

The image displays a musical score for the Samba song "Se meu amor me vê" by Sinhô, arranged by Domingos da Rocha Mussurunga. The score is written for a full orchestra and is set in 2/4 time with a key signature of one sharp (F#). The instruments and their parts are as follows:

- Flauta:** Plays a melodic line with eighth-note patterns and a final flourish.
- Clarinete em B $\flat$ :** Mirrors the flute's melodic line.
- Saxofone em E $\flat$ :** Provides a harmonic accompaniment with sustained notes and a melodic line.
- Pistão em B $\flat$ :** Plays a rhythmic accompaniment with dotted eighth notes.
- Trombone:** Provides a rhythmic accompaniment with eighth notes.
- Violino:** Mirrors the flute's melodic line.
- Violoncelo:** Mirrors the piston's rhythmic accompaniment.
- Contrabaixo:** Provides a rhythmic accompaniment with eighth notes.

5

Fl.

Cl. B $\flat$

Sx. E $\flat$

Pst. B $\flat$

Tbn.

Vln.

Vc.

Cb.

*tr*

**Fine**

Con 8<sup>a</sup> divisi

Detailed description: This is a page of a musical score for the piece 'Se meu amor me vê' by Sinhô. The score is for a full orchestra and includes parts for Flute (Fl.), Clarinet in B-flat (Cl. B $\flat$ ), Saxophone in E-flat (Sx. E $\flat$ ), Piccolo (Pst. B $\flat$ ), Trombone (Tbn.), Violin (Vln.), Viola (Vc.), and Cello (Cb.). The music is in 4/4 time and features a key signature of two sharps (F# and C#). The score begins at measure 5. The Flute part starts with a trill (tr) and ends with a 'Fine' marking. The Saxophone part has a melodic line with a slur. The Violin part is marked 'Con 8<sup>a</sup> divisi' (with 8th division). The Cello part has a steady rhythmic accompaniment. The score concludes with a double bar line and repeat dots.

9

Fl.

Cl. B $\flat$

Sax. E $\flat$

Pst. B $\flat$

Tbn.

Vln.

Vc.

Cb.

Detailed description: This is a page of a musical score for a band. It features eight staves for different instruments: Flute (Fl.), Clarinet in B-flat (Cl. B $\flat$ ), Saxophone in E-flat (Sax. E $\flat$ ), Piccolo (Pst. B $\flat$ ), Trombone (Tbn.), Violin (Vln.), Viola (Vc.), and Cello (Cb.). The score is in 4/4 time and starts at measure 9. The key signature has two sharps (F# and C#). The Flute part has a melodic line with slurs and accents. The Clarinet and Saxophone parts have similar melodic lines. The Piccolo and Trombone parts have more rhythmic patterns. The Violin and Viola parts have a steady eighth-note accompaniment. The Cello part has a simple bass line. The score is written in black ink on a white background.

13

Fl.

Cl. B $\flat$

Sx. E $\flat$

Pst. B $\flat$

Tbn.

Vln.

Vc.

Cb.

1.

2.

loco

Detailed description: This is a page of a musical score for the piece 'Se meu amor me vê' by Sinhô. The page is numbered 4 in the top left and 13 in the top left of the score. The score is arranged in a system of eight staves. The instruments are: Flute (Fl.), Clarinet in B-flat (Cl. B $\flat$ ), Saxophone in E-flat (Sx. E $\flat$ ), Piccolo (Pst. B $\flat$ ), Trombone (Tbn.), Violin (Vln.), Viola (Vc.), and Cello (Cb.). The key signature has two sharps (F# and C#), and the time signature is 4/4. The score begins at measure 13. The woodwinds and strings play a melodic line, while the brass instruments provide harmonic support. There are two first endings (1.) and a second ending (2.) in the final measures. The word 'loco' is written above the violin staff in the final measure.

18

Fl.

Cl. B $\flat$

Sax. E $\flat$

Pst. B $\flat$

Tbn.

Vln.

Vc.

Cb.

Detailed description: This is a page of a musical score for a band. It features eight staves, each representing a different instrument. The instruments are Flute (Fl.), Clarinet in B-flat (Cl. B $\flat$ ), Saxophone in E-flat (Sax. E $\flat$ ), Piccolo (Pst. B $\flat$ ), Trombone (Tbn.), Violin (Vln.), Viola (Vc.), and Cello (Cb.). The score begins at measure 18, indicated by a vertical line and the number '18' above the Flute staff. The music is written in treble clef for the Flute, Piccolo, and Violin, and bass clef for the Clarinet, Saxophone, Trombone, Viola, and Cello. The key signature has two sharps (F# and C#). The notation includes various note values, rests, and dynamic markings such as 'p' (piano) and 'f' (forte). The Flute and Violin parts have a melodic line with some grace notes. The Clarinet, Saxophone, Piccolo, and Viola parts provide harmonic support with rhythmic patterns. The Trombone and Cello parts have a more rhythmic, bass-oriented line.

**D.C. al Fine**

22

Fl.

Cl. B $\flat$

Sx. E $\flat$

Pst. B $\flat$

Tbn.

Vln.

Vc.

Cb.

# Se meu amor me vê

Samba

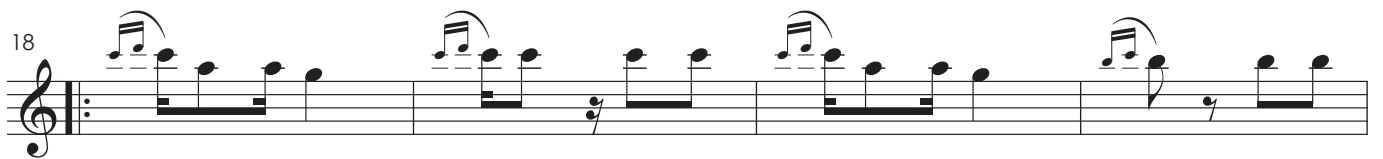
Flauta

Orquestração: Domingos da Rocha Mussurunga

Sinhô



Fine



D.C. al Fine



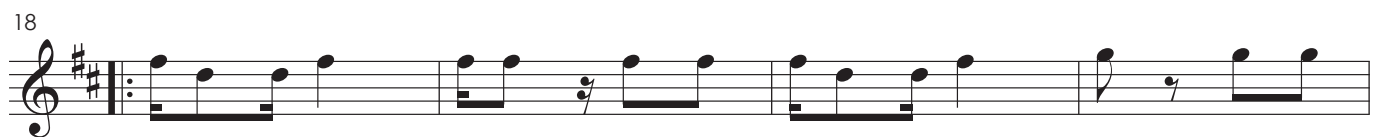
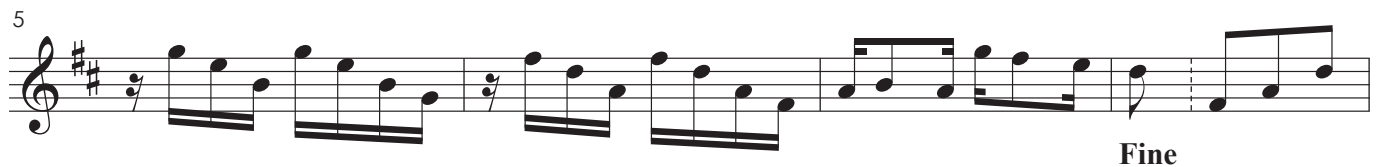
# Se meu amor me vê

Samba

Clarinete em B $\flat$

Orquestração: Domingos da Rocha Mussurunga

Sinhô



D.C. al Fine

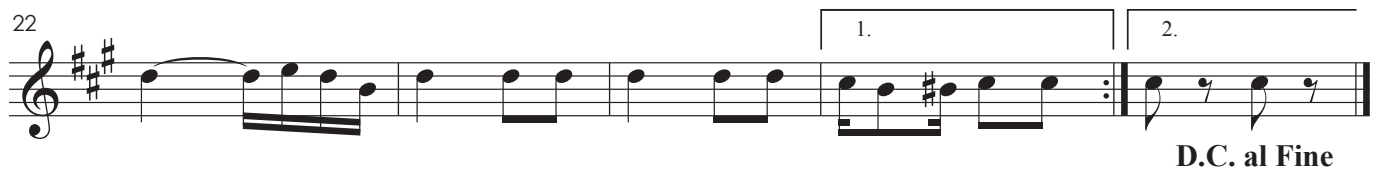
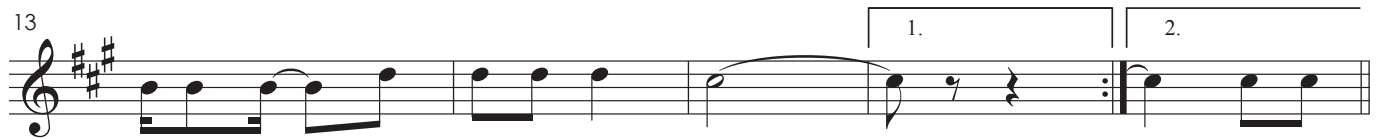
# Se meu amor me vê

Samba

Saxofone em E $\flat$

Orquestração: Domingos da Rocha Mussurunga

Sinhô



# Se meu amor me vê

Samba

Pistão em B $\flat$

Orquestração: Domingos da Rocha Mussurunga

Sinhô



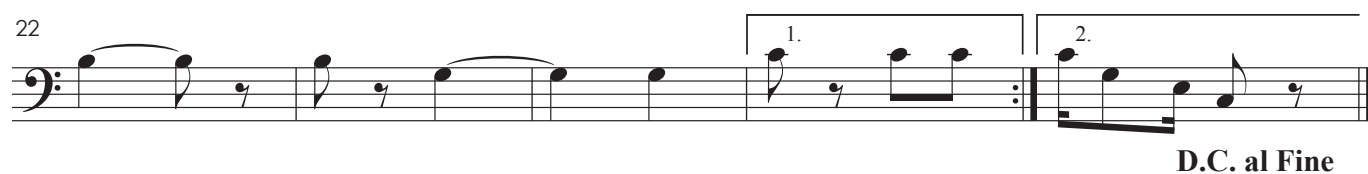
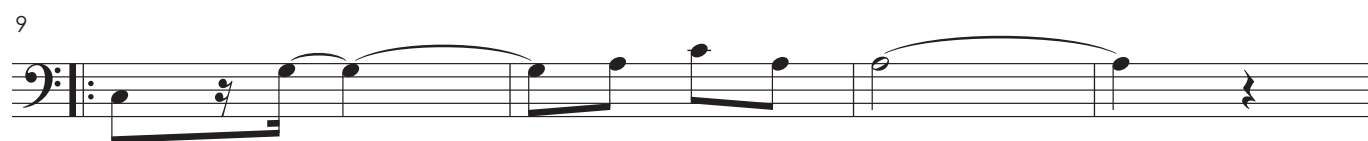
# Se meu amor me vê

Samba

Trombone

Orquestração: Domingos da Rocha Mussurunga

Sinhô



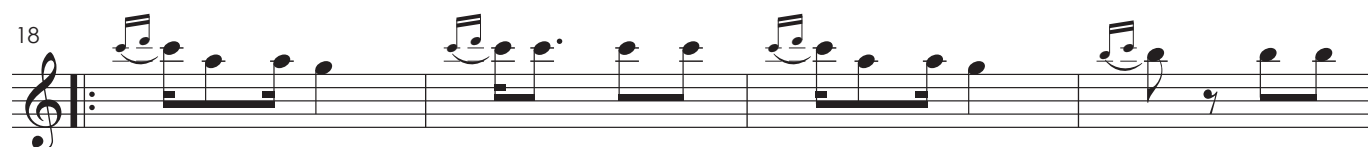
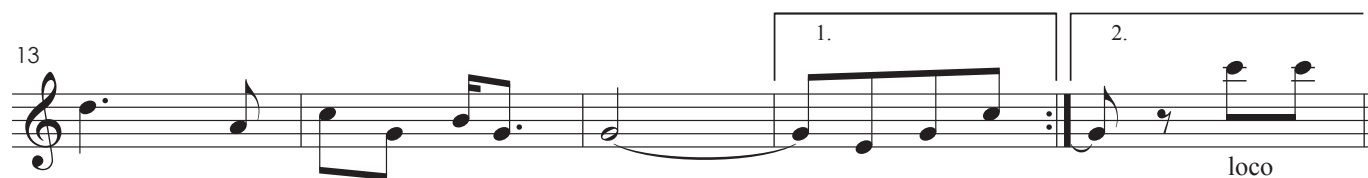
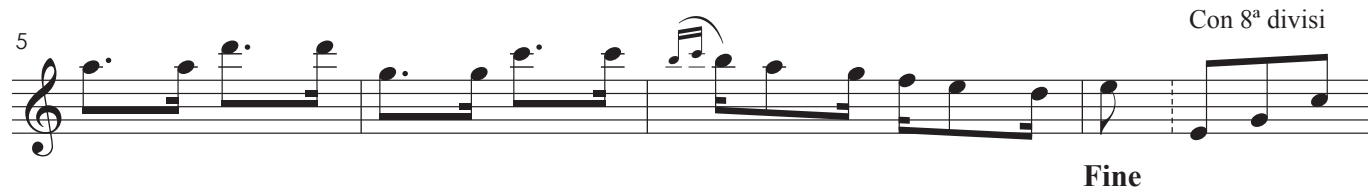
# Se meu amor me vê

Samba

Violino

Orquestração: Domingos da Rocha Mussurunga

Sinhô

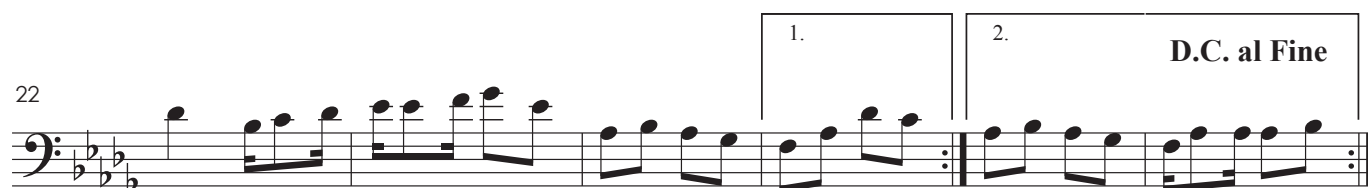
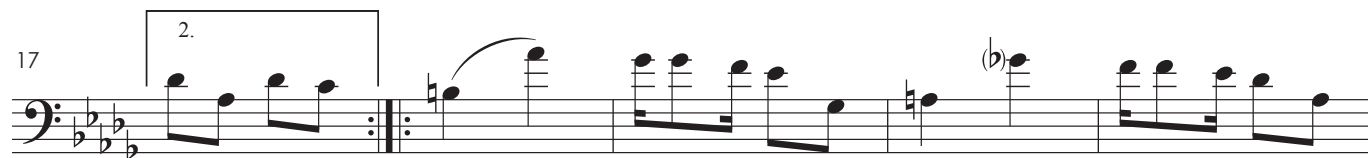


# Burro de carga

Samba

Violoncelo

Sinhô



# Se meu amor me vê

Samba

Contrabaixo

Orquestração: Domingos da Rocha Mussurunga

Sinhô



5



9



13



18



22

